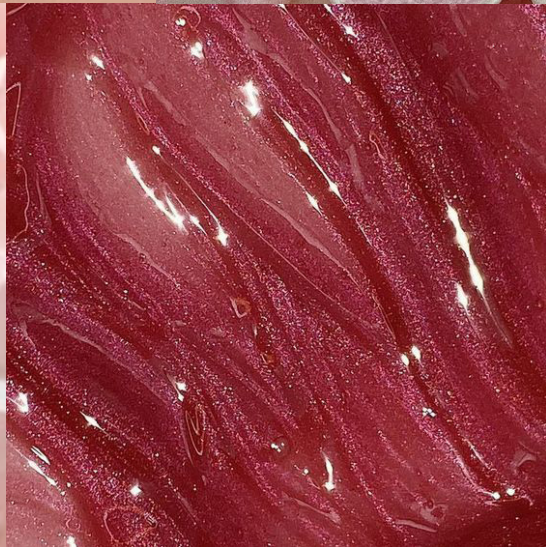


LIPS

LIP GLOW

FULL SERVICE
PROPOSAL

DESIGNED BY



PRODUCT BENEFIT HIGHLIGHTS

Products grouped by core performance

PEPTIDES

Active color & care



LIPTIDE



ON-THE-GLOW



LIP THERAPY

PLUMPING

Volume & fullness effect



FILLER TRICK



GO COOL!

GLOSSY

Shine & reflective finish



TEENAGE DREAM



GLAZER.



PHANTOM VYNIL

CARE

Nourishing & repairing



LYNFA



SWEET CRUMBLE



AFTER-KISS



ETHEREAL



GLOW DRIP

PEPTIDES

DESIGNED BY



LIPTIDE

LIQUID LIP BALM

Liptide is an innovative wax-free gloss formulated with carefully selected ingredients. Its rich, enveloping texture glides smoothly onto the lips, forming a comfortable, cushioning film that enhances shine with a refined, sophisticated finish. Enriched with a peptide and a nourishing blend of oils and butters, the formula helps improve the appearance of smoother, softer-looking lips while supporting a conditioned feel. Hyaluronic acid contributes to maintaining lip hydration and helps visibly smooth the appearance of fine lines, for lips that look naturally fuller and well-defined.

ACTIVE INGREDIENTS

- ★ **BLEND OF POLYMERS:** provides a cushiony, bouncy texture.
- ★ **BLEND OF ESTERS:** ensures emollience and smooth fluidity.
- ★ **STABILIZED NATURAL PEPTIDE (Functional %):** stimulates collagen and hyaluronic acid synthesis for firmer, smoother, and more defined lips.
- ★ **HYALURONIC ACID:** delivers intense hydration with visible plumping and filling effects.
- ★ **VOLUMIZING AGENT (Functional %):** enhance lip fullness.

CLAIMS

- ♥ **VEGAN FRIENDLY - NO INGREDIENTS SOURCED OR DERIVED FROM ANIMALS**
- ♥ CUSHIONY TEXTURE WITH GLOSSY FINISH
- ♥ ENRICHED WITH PEPTIDES & HYALURONIC ACID
- ♥ PROVIDES SMOOTHER, SOFTER-LOOKING LIPS

COCOON TIP

- ★ **Ergonomic shape,** the special shape adapts to the lips and grants a nice and sensorial application.
- ★ **Rounded Surface,** the rigid rounded surface helps the formula to swipe perfectly and spread the product greatly, enjoying every application.



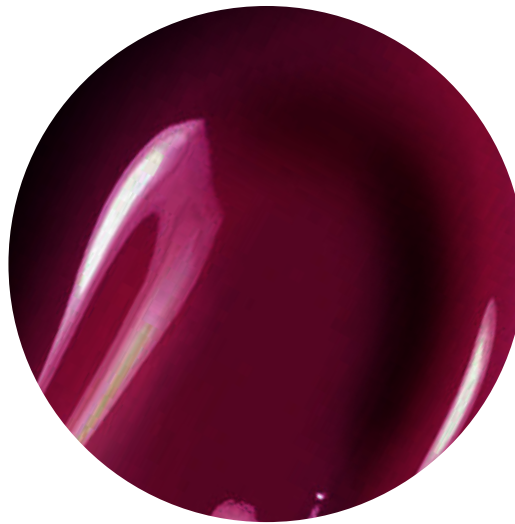
SUGGESTED PACKAGING: LABIAL TUBE WITH COCOON TIP

LIPTIDE

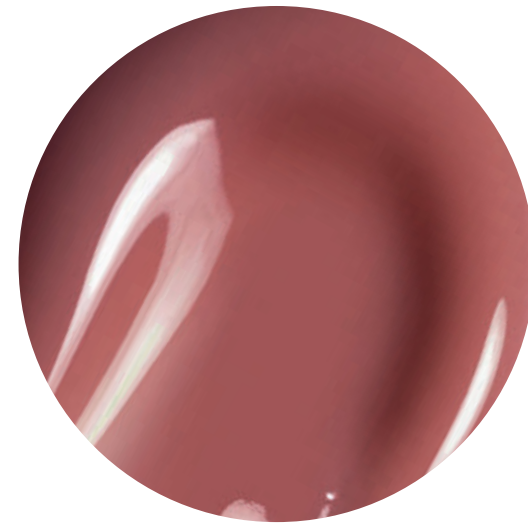
LIQUID LIP BALM



BALLERINA
AROMA: SICILIAN DATE + SUGAR
COD. MK/EF-8126PRD



CHERRY ON TOP
AROMA: SICILIAN DATE + SUGAR
COD. MK/EF-8123PRD



ESPRESSO GLOW
AROMA: SICILIAN DATE + SUGAR
COD. MK/EF-8124PRD

ON-THE-GLOW

SPF 30 LIP GLOSS

We're excited to reveal our secret for beautifully smooth and radiant lips... On-the-Glow is a unique gloss formulated with innovative ingredients. Thanks to the complete absence of waxes, it creates an ultra-light, non-sticky film that leaves a sophisticated, polished finish on your lips. Enriched with hyaluronic acid, it helps to hydrate and plump lips, enhancing their natural fullness and smoothness. Infused with sweet fragrances, it transforms application into a delightful sensory experience. Formulated with SPF 30, it also provides protection against sun exposure, making it perfect for everyday wear.

ACTIVE INGREDIENTS

- ★ **MIX OF POLYMERS:** provides a cushiony, bouncy texture for a comfortable, luxurious feel.
- ★ **MIX OF ESTERS:** delivers emollience and fluidity, ensuring smooth and easy application.
- ★ **PEPTIDES (FUNCTIONAL DOSE):** helps support the skin's appearance and overall texture.
- ★ **HYALURONIC ACID (FUNCTIONAL DOSE):** hydrates and nourishes, enhancing the look of skin elasticity and promoting a smoother, refreshed appearance.

CLAIMS

- ♥ **VEGAN FRIENDLY - NO INGREDIENTS SOURCED OR DERIVED FROM ANIMALS**
- ♥ **SPF 30 TESTED**
- ♥ DELIVERS SUPPLE & POLISHED LIPS
- ♥ ENRICHED WITH PEPTIDES & HYALURONIC ACID
- ♥ FREE FROM: TALC, MICROPLASTICS

STANDARD TIP

- ★ **Classic shape,** easy to use for effortless application.
- ★ **Smooth Flow,** evenly dispenses product with minimal effort.
- ★ **Mess-Free,** ideal for quick and on-the-go touch-ups.



All the information contained in this marketing sheet is provided for informational purposes only. The descriptive terms used herein are to be understood solely as adjectives referring to the texture and/or the sensorial profile of the formula. We remind you that, in accordance with Regulation (EU) No 655/2013, any claim concerning the characteristics, performance, or properties of a cosmetic product must be supported by adequate and verifiable evidence. Should the client copy, reproduce, or extract claims from this marketing sheet, such action is carried out under the client's sole responsibility. In any case, the client is required to verify and ensure the availability of the necessary supporting documentation in the country where the product will be marketed. Mktg Industry therefore declines any responsibility for the claims made by the client on product packaging, marketing materials, communication tools, or advertising activities, which remain under the sole liability of the client.

ON-THE-GLOW

LIP GLOSS



BLUSHED
AROMA: SICILIAN DATE + SUGAR
COD. MK/EF-8099PRD



CHERRY KISS
AROMA: SICILIAN DATE + SUGAR
COD. MK/EF-8116PRD



MOCHA GLOW
AROMA: SICILIAN DATE + SUGAR
COD. MK/EF-8106PRD

LIP THERAPY

LIP TREATMENT

A rich, cocooning balm designed to help restore comfort to lips that feel dry, stressed or dehydrated. Its nourishing texture envelops the lips in a soft protective veil, helping to improve the appearance of smoothness, softness and natural radiance. A blend of vegan conditioning agents and emollients helps support hydration and long-lasting comfort without leaving a heavy feel. A lip-enhancing peptide contributes to a smoother and fuller-looking appearance, leaving lips feeling soft, supple and visibly revitalized. With regular use, lips appear smoother, more comfortable and naturally healthy-looking.

ACTIVE INGREDIENTS

- ★ **PEPTIDE LIP ENHANCER (Functional %):** stimulates the synthesis of collagen and glycosaminoglycans, particularly hyaluronic acid, to make the lips more hydrated, well-defined, firmer, and smoother.
- ★ **AÇAÍ EXTRACT (EUTERPE OLERACEA):** known for its nourishing and antioxidant properties, it helps support lip hydration and contributes to maintaining the skin's natural barrier function. The extract also helps protect the lips from environmental stressors, promoting a smoother and healthier-looking appearance.
- ★ **VEGAN CONDITIONING BLEND:** provides sensoriality and a protective barrier effect.
- ★ **SHEA BUTTER:** is extra-nourishing, naturally rich in Vitamin E, Vitamin A, and Vitamin F.
- ★ **RICH AND LUMINOUS EMOLLIENTS:** ensure a lasting sensation of hydration and nourishment.

CLAIMS

- ♥ **VEGAN FRIENDLY - NO INGREDIENTS SOURCED OR DERIVED FROM ANIMALS**
- ♥ RICH CARING TREATMENT
- ♥ MANTAINS LIP MOISTURE
- ♥ PROMOTES SMOOTHER, NOURISHED AND REVITALIZED-LOOKING LIPS.
- ♥ FORMULATED WITHOUT: EDTA, PEGs, Paraffin (mineral oil), Ethoxylates, Parabens, Silicones, Cyclic Silicones, Phenoxyethanol

DONUT TIP

- ★ **Donut-shape,** hugs the lips, ensuring even product distribution and a smooth glide.
- ★ **Cushion-touch,** the soft silicone structure delivers a bouncy feel for comfortable application.
- ★ **Multi-zone design,** central cavity releases the ideal amount of product, while the rounded edges define the lip contour with precision.



SUGGESTED PACKAGING: LIP TUBE WITH DONUT TIP

PLUMPING

DESIGNED BY



FILLER TRICK

VOLUMIZING LIP GLOSS

A lip product that combines the power of makeup with skincare, offering a complete solution. This gel gloss, with a fluid yet rich texture, is extremely pleasant to apply and non sticky, ensuring a lasting sensation of softness and hydration. In addition to visually volumizing the lips without a tingling effect, it provides intense color, extraordinary shine, absolute comfort, and care in a single gesture.

ACTIVE INGREDIENTS

- ★ **PLUMPING ACTIVE (Functional %):** powerful active ingredient derived from fenugreek that has the extraordinary ability to maximize lip volume and minimize "barcode" wrinkles. In vitro tests on the active ingredient show that the extract modulates the activity of proteins that stimulate adipocyte differentiation and lipid accumulation, resulting in a filling and plumping effect.
- ★ **VITAMIN E (Marketing %):** antioxidant and protective active.

CLAIMS

- ♥ **VEGAN FRIENDLY - NO INGREDIENTS SOURCED OR DERIVED FROM ANIMALS**
- ♥ PLUMPING EFFECT
- ♥ NON-STICKY TEXTURE
- ♥ GLOSSY FINISH
- ♥ MIRROR EFFECT
- ♥ FORMULATED WITHOUT: EDTA, PEGs, PARAFFIN (MINERAL OIL), PARABENS, ETHOXYLATED, SILICONES, CYCLIC SILICONES, PHENOXYETHANOL



GO COOL!

LIP GLOSS

Discover the next generation of lip formulas with this smoothing and extra comfortable gloss that hugs your lips in a plastic film, while leaving an enveloping sense of well-being, with an element of surprise. The formula provides an immediate and intense cooling effect like the one given by an ice cube that melts in contact with the warmth of the skin. The lips are optically fuller and more voluminous thanks to the combination of ultra-reflective polymers that donate a fantastic mirror and 3D effect of a gloss with the pleasantness of a lip oil.

ACTIVE INGREDIENTS

- ★ **SMART COOLING AGENT:** innovative cooling agent derived from menthol that provides an immediate, intense, noninvasive and long-lasting cooling effect. Fragrance free, it allows you to choose your favorite scent for its formula. It acts by stimulating the thermoreceptors creating an intense feeling of freshness like the one given by an ice cube that melts in contact with the warmth of the skin. The effect persists even when the product has been absorbed on the lips.
- ★ **HIGH SHINE POLYMERS:** guarantee a long-lasting tridimensional glossy effect without feeling sticky.

CLAIMS

- ♥ **VEGAN FRIENDLY**
NO INGREDIENTS SOURCED OR DERIVED FROM ANIMALS
- ♥ HOLOGRAPHIC 3D EFFECT
- ♥ COOLING EFFECT WITH VINYLIC FINISH
- ♥ FREE FROM: EDTA, PEGS, OILS, PARAFFIN (MINERAL OIL), ETHOXYLATES, PARABENS, SILICONES, CYCLIC SILICONES, PHENOXYETHANOL





OPAL
COD. MK/BC-426-12-001P



ROSE PRISM
COD. MK/BC-426-12-003P



SUNBEAM
COD. MK/BC-426-12-004M



TROPICAL
COD. MK/BC-426-12-006P



MULLED WINE
COD. MK/BC-426-12-005F

GLOSSY

DESIGNED BY



TEENAGE DREAM

LIP GLOSS

Teenage Dream is a new special gloss without waxes, activated with innovative raw materials. Thanks to the completely absence of waxes, it dresses up your lips with a very lightweight film, leaving a very sophisticated finish on your lips. A "collagen booster", together with particular blend of oils and butter works to a fantastic hydrated and rejuvenated result. A Lip Volumizer wisely formulated with hyaluronic acid, the best ally to help the hydration and fill the small wrinkle with its filler properties.

ACTIVE INGREDIENTS

- ★ **HYALURONIC ACID:** hydrating and filler properties.
- ★ **MIX OF POLYMERS:** cushion and bouncy texture.
- ★ **MIX OF ESTERS:** emollient and fluidity.
- ★ **BLEND OF JOJOBA AND ALMOND OIL:** nourishing and moisturizing properties.
- ★ **NATURAL STABILIZED PEPTIDE:** stimulates collagen and hyaluronic acid synthesis for firmer, smoother and well defined lips.
- ★ **VITAMIN E:** anti-oxidant properties.

**Also available with Capsicum (in marketing %) to increase plumping and volumizing effect.*

CLAIMS

- ♥ **VEGAN FRIENDLY - NO INGREDIENTS SOURCED OR DERIVED FROM ANIMALS**
- ♥ HYALURONIC ACID
- ♥ FILLER ACTION
- ♥ LONG TIME HYDRATION
- ♥ SOOTHING & NOURISHING PROPERTIES
- ♥ WAX FREE
- ♥ DELICATE VEIL OF COLOR WITH GLOSSY FINISH
- ♥ FREE FROM PARABENS



SUGGESTED PACKAGING: LIP GLOSS HALO

TEENAGE DREAM

LIP GLOSS



WITHOUT PEARLS



CHESTNUT
COD. MK/EF 6512



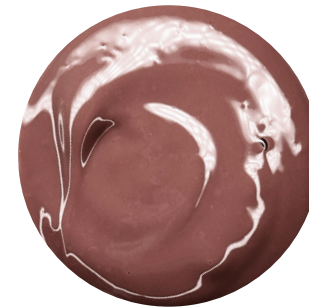
FOREVER NUDE
COD. MK/EF 5267



BRICKY BROWN
COD. MK/EF 5270



ENCHANTING NUDE
COD. MK/EF 6310



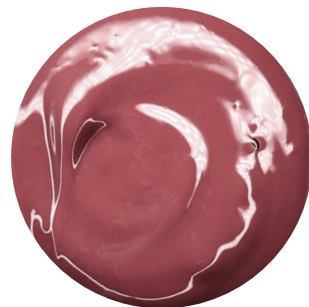
ICONIC NUDE
COD. MK/EF 6544



COLD BROWN
COD. MK/EF 6820



DARK CHERRY
COD. MK/EF 6837



POSH PINK
COD. MK/EF 6999



SCARLETT RED
COD. MK/EF 6869



STRAWBERRY
COD. MK/EF 6307



CANDY PINK
COD. MK/EF 6513

TEENAGE DREAM

LIP GLOSS



WITH PEARLS



GALAXY
COD. MK/EF 7325



BARBIE WORLD
COD. MK/EF 7210



FRESH WATERMELON
COD. MK/EF 6881



PEACHY
COD. MK/EF 7382



GOLDEN SUNSET
COD. MK/EF 6507



SPRITZ ROSÉ
COD. MK/EF 6707



SECRET HOLO
COD. MK/EF 6510



SPARKLING MAUVE
COD. MK/EF 6511



PURPLE GLAZE
COD. MK/EF 5269



DISRUPTIVE BROWN
COD. MK/EF 5268



COFFEE O'CLOCK
COD. MK/EF 6957



SPARKLING NUDE
COD. MK/EF 6338

GLAZER.

LIP GLOSS

GLAZER. Lip Gloss envelops the lips in a luscious, high-shine glaze. Its cocooning, cushiony texture wraps the lips in lasting comfort, providing a smooth and conditioning feel. Formulated with hydrating and emollient ingredients, it helps maintain lip softness while enhancing the appearance of naturally fuller-looking lips. With every application, it glides on effortlessly, coating the lips in a sleek, light-reflecting veil. The finish is ultra-glossy, lightweight, and radiant, leaving lips looking smooth, luminous, and visibly enhanced. Effortlessly bold yet refined, GLAZER. Lip Gloss enhances the lips, making them the standout feature of any look. Also available in a sparkling version to add an extra touch of radiance and shimmer, enhancing the lips with light-reflecting effect for a sophisticated look.

ACTIVE INGREDIENTS

- ★ **AÇAÍ EXTRACT (Marketing %):** a multifunctional active ingredient derived from the cold-pressed oil of açai berry seeds (*Euterpe oleracea*), known for its moisturizing, protective, and brightening properties. It enhances skin hydration and barrier function, while protecting against environmental stressors responsible for skin aging.
- ★ **VITAMIN E (Marketing %):** it improves the condition of the skin's surface, maintaining its elasticity, softness, and firmness. It protects lipids and helps maintain proper hydration.
- ★ **HIGH SHINE POLYMERS:** ensure a long-lasting, three-dimensional glossy effect without any stickiness.

CLAIMS

- ♥ **VEGAN FRIENDLY - NO INGREDIENTS SOURCED OR DERIVED FROM ANIMALS**
- ♥ BOUNCY AND CUSHIONY TEXTURE
- ♥ GLAZED LOOK AND LIGHT-REFLECTING EFFECT
- ♥ COCOONING COMFORT AND HYDRATED-LOOKING LIPS
- ♥ FORMULATED WITHOUT: EDTA, PEGS, PARAFFIN (MINERAL OIL), ETHOXYLATES, PARABENS, SILICONES, CYCLIC SILICONES, PHENOXYETHANOL



PHANTOM VINYL

HIGH-SHINE TOP COAT

An ultra-reflective crystal-effect lip top coat designed to enhance brilliance, visual volume and comfort. Its enveloping texture forms a smooth, flexible film that enhances the color of any lipstick or beautifies natural lips with a three-dimensional mirror-like finish. The high-shine effect reflects light to create the appearance of fuller, brighter-looking lips, while the elastic, lightweight film adheres comfortably without leaving a sticky or heavy feel. The formula is enriched with Vitamin E, known for its antioxidant properties, helping to maintain lip comfort and protect against dryness. Upon application, the texture smooths the lip surface, improving the appearance of fine lines and enhancing overall uniformity. Ideal as a transformative top coat, it instantly revives any lipstick with a high-definition vinyl finish and amplified gloss.

ACTIVE INGREDIENTS

- ★ **POLYBUTENE:** lipophilic polymer used as high-gloss base. Contributes to crystal-clear transparency, enhances glide during application and promotes uniform adhesion to the lips. Forms a flexible film that supports long-lasting shine.
- ★ **TOCOPHEROL (VITAMIN E):** known for helping to protect the lips from oxidative stress. Contributes to maintaining lip comfort and softness.
- ★ **STRUCTURING GELLING SYSTEM:** stabilizes the texture and provides body to the formula. Supports cushion-like consistency, facilitates precise and even application, and helps maintain homogeneous dispersion of glossy components.

CLAIMS

- ♥ **VEGAN FRIENDLY - NO INGREDIENTS SOURCED OR DERIVED FROM ANIMALS**
- ♥ MIRROR-LIKE EFFECT
- ♥ CUSHIONY TEXTURE
- ♥ CRYSTAL CLEAR FINISH
- ♥ VISUALLY PLUMPED & FULLER LIPS



SUGGESTED PACKAGING: LIPGLOSS ELITE XL

CARE

DESIGNED BY



AFTER-KISS

LIP MASK

A restorative lip mask designed to help revive lips and restore their natural softness after every kiss! Its rich, comforting texture envelops the lips in a nourishing veil, promoting a smoother, softer and more velvety appearance.

Available many gourmet flavors, the formula works like a therapy for the lips, providing intense hydration and helping to reduce the feeling of dryness and roughness. With regular use, lips appear smoother, more supple and beautifully conditioned. Perfect as an overnight treatment, After-Kiss leaves lips feeling pampered, smooth and ready for every new moment.

ACTIVE INGREDIENTS

- ★ **Maxi Lip™ (Functional%)**: peptide-based active ingredient designed to help improve the appearance of lip smoothness and fullness with continued use.
- ★ **BLEND OF THREE NATURAL WAXES**: jojoba, mimosa and sunflower waxes help provide smooth glide and contribute to a soft, comfortable feel on the lips.
- ★ **SHEA BUTTER**: known for its nourishing and softening properties, it helps condition the lips and support long-lasting comfort.
- ★ **INSTANT PLUMPING EFFECT**: provides a visibly fuller-looking lip appearance with a comfortable sensation, without the use of warming ingredients such as chili pepper.

CLAIMS

- ♥ **VEGAN FRIENDLY - NO INGREDIENTS SOURCED OR DERIVED FROM ANIMALS**
- ♥ RESTORATIVE LIP TREATMENT
- ♥ DEEP NOURISHING CARE
- ♥ AVAILABLE IN MANY GOURMET FLAVOURS
- ♥ DELIVERS SMOOTHED & CONDITIONED LIPS
- ♥ FORMULATED WITHOUT: D4, D5, D6



SUGGESTED PACKAGING: PLASTIC JAR WITH SPATULA

SWEET CRUMBLE

LIP SCRUB



If you love showing off flawless lips, the secret starts with the base: a good lip scrub. It prepares the lips, creating a smooth and refined surface that enhances the application and finish of any lip product. Beyond its functional role, it offers a pleasant sensorial experience, making it an ideal addition to any lip care routine. Formulated with fine, delicate exfoliating particles, this scrub ensures a gentle action that respects the lips while effectively prepping the lips. Using it once or twice a week leaves the lips feeling softer, smoother, and beautifully ready for makeup.

ACTIVE INGREDIENTS

- ★ **COMPOUND OF WAXES & GELLIFIERS:** for a gelly and bouncy texture.
- ★ **NATURAL BAMBOO UPCYCLED:** for a gentle scrub.

CLAIMS

- ♥ **VEGAN FRIENDLY - NO INGREDIENTS SOURCED OR DERIVED FROM ANIMALS**
- ♥ GENTLE EXFOLIATION
- ♥ SOFT & SUPPLE LIPS
- ♥ GOURMAND SCENT AND CREAMY TEXTURE
- ♥ FORMULATED WITH UPCYCLED BAMBOO PARTICLES
- ♥ FORMULATED WITHOUT: TALC, MICROPLASTICS

DONUT TIP

- ★ **Donut-shape**, hugs the lips, ensuring even product distribution and a smooth glide.
- ★ **Cushion-touch**, the soft silicone structure delivers a bouncy feel for comfortable application.
- ★ **Multi-zone design**, central cavity releases the ideal amount of product, while the rounded edges define the lip contour with precision.



SUGGESTED PACKAGING: LIP TUBE WITH DONUT TIP

ETHEREAL

LIP OIL

This lightly tinted lip oil gives your lips a shiny, radiant finish while keeping them deeply hydrated all day long. Its innovative formula combines a range of active ingredients designed to enhance both the look and feel of your lips. The result is a see-through, lightly pink gloss that brightens your lips, emphasizes their natural beauty, and improves their appearance with regular use.

ACTIVE INGREDIENTS

- ★ **HYALURONIC FILLING SPHERES:** have the capacity of smoothing deep wrinkles, giving a long-lasting hydration.
- ★ **PALMITOYL TRIPEPTIDE (mktg %):** provides improvement of the internal and superficial lip texture with a visible impact on the lip shape. It also provides an increase in lip volume, hydration, and softness, as well as an anti-ageing and anti-sagging effect.
- ★ **PHYTOSTERYL/OCTYLDODECYL LAUROYL GLUTAMATE:** a skin-conditioning agent derived from L-Glutamic Acid and phytosterols, known for its moisturizing properties. It helps to soften and smooth the lips while strengthening the natural barrier and providing comfort and protection.
- ★ **GOLDEN JOJOBA OIL:** gives nourishing, hydrating, and emollient properties.
- ★ **JELLY OIL:** that starts to moisturize effectively as soon as it is applied.

CLAIMS

- ♥ **VEGAN FRIENDLY - NO INGREDIENTS SOURCED OR DERIVED FROM ANIMALS**
- ♥ EXTRA SHINY FINISH
- ♥ ENRICHED WITH PEARLS
- ♥ INFUSED WITH HYALURONIC FILLING SPHERES & PALMITOYL TRIPEPTIDE
- ♥ KEEPS THE LIPS HYDRATED ALL DAY LONG



SUGGESTED PACKAGING: CRYSTAL SQUARE LIP GLOSS

GLOW DRIP

LIP OIL

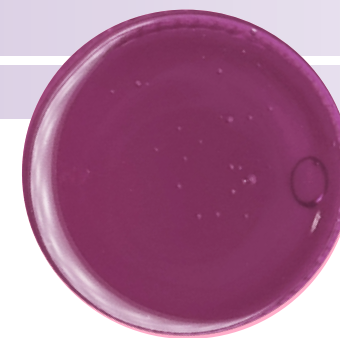
Experience next-generation lip care with GLOW DRIP. A sophisticated blend of shine-enhancing oils and ultra-light emollients forms a crystal-clear film that envelops the lips in long-lasting comfort. Never sticky, always luminous. Enriched with a peptide complex, the formula helps maintain optimal hydration and improves the appearance of smoother, softer, and visibly fuller-looking lips. Instant glow. Lasting comfort.

ACTIVE INGREDIENTS

- ★ **VISCOUS, SHINY OIL:** provides adhesion and forms a thin, glossy film on the lips.
- ★ **LIGHT, GLOSSY OIL:** ensures smooth application and a non-sticky, comfortable texture.
- ★ **GELLING AGENT:** enhances skin-feel and sensoriality without affecting transparency.
- ★ **100% NATURALLY DERIVED SHEA BUTTER OIL:** delivers a balmy, nourishing feel.
- ★ **PEPTIDE:** helps improve the appearance of smoother lips and enhances the look of fullness.

CLAIMS

- ♥ **VEGAN FRIENDLY - NO INGREDIENTS SOURCED OR DERIVED FROM ANIMALS**
- ♥ EXTRA SHINE FINISH
- ♥ ENRICHED WITH PEPTIDE COMPLEX
- ♥ PROVIDES SMOOTHER AND SOFTER LIPS, MAINTAINING HYDRATION
- ♥ LONG LASTING COMFORT
- ♥ FORMULATED WITHOUT: SILICON



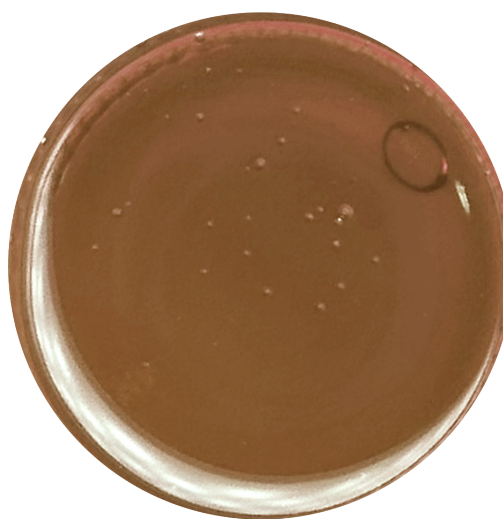
SUGGESTED PACKAGING: LIPGLOSS PUFFY

GLOW DRIP

LIP OIL



BERRY KISS
AROMA: PRICKLY PEAR
COD. MK/IB-RA.FL0003L002



TOFFEE
AROMA: SWEET COFFEE
COD. MK/IB-RA.FL0003M003



CRYSTAL
AROMA: LEMON
COD. MK/IB-RA.FL0003T001

LYNFA

LIP OIL WITH REAL FLOWERS

Your lips are ready to bloom with Lynfa Lip Oil! A transparent sheer gloss with infused pink petals. It is enriched with little gold pearls that give extra shine to the lips. Lynfa Lip Oil also contain Golden Jojoba Oil with nourishing, hydrating and emollient properties and a jelly oil that starts to moisturize effectively as soon as it is applied. Light, transparent make-up that immediately brightens the lips, highlights their natural beauty and enhances them day after day. The formula is enriched with real flower petals of Helichrysum Flowers, in colors pink to white. This flower is cultivated in Netherland and is responsible and local sourcing with hand sorting harvest. The flower has anti-ageing and skin balance properties.

ACTIVE INGREDIENTS

- ★ **HYALURONIC FILLING SPHERES:** have the capacity of smoothing deep wrinkles giving a long-lasting hydration.
- ★ **GOLDEN JOJOBA OIL:** gives nourishing, hydrating and emollient properties.
- ★ **JELLY OIL:** that starts to moisturize effectively as soon as it is applied.
- ★ **PEARLS**

CLAIMS

- ♥ **VEGAN FRIENDLY**
- ♥ **NO INGREDIENTS SOURCED OR DERIVED FROM ANIMALS**
- ♥ FLOWER PETAL INFUSED OIL
- ♥ LONG LASTING
- ♥ HYDRATING AND EMOLIENT
- ♥ ULTRA-SHINE FINISH



STANDARD MEGA FLOCK

SUGGESTED PACKAGING: LIPGLOSS ELITE XL + APP. #57



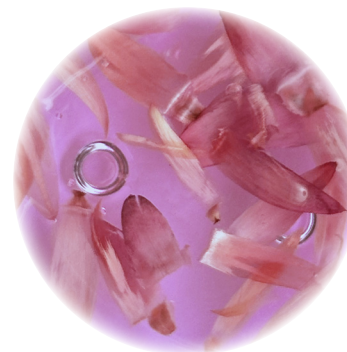
FAIRY PINK

COD. MK/MP-L1189-9.003P
(VANILLA AROMA)



PEACHY NUDE

COD. MK/MP-L1189-9.004N
(VANILLA AROMA)



VIOLET

COD. MK/MP-L1189-26.001V
(VIOLET AROMA)
/
COD. MK/MP-L1189-9.005V
(VANILLA AROMA)



CORAL VIBES

COD. MK/MP-L1189-24.001P
(PEACH AROMA)
/
COD. MK/MP-L1189-9.006P
(VANILLA AROMA)



HOT PINK

COD. MK/MP-L1189-25.001R
(STRAWBERRY AROMA)



CLEAR

COD. MK/MP-L1189-23.001T
(COCONUT AROMA)



NEUTRAL NUDE

COD. MK/MP-L1189-9.007O
(VANILLA AROMA)

LIP ARCHITECT

LIP LINER



Lip Architect is a versatile lip pencil designed to define, shape and enhance the lips, creating the perfect base for any lipstick or gloss combination. Its smooth, blendable texture glides on effortlessly, making it ideal for soft contours or seamless lip looks across different finishes. The formula features a balanced blend of waxes and film-forming agents, ensuring precise application, flexibility and lasting comfort throughout the day.

ACTIVE INGREDIENTS

- ★ **BALANCED BLEND OF WAXES:** for optimal structure and smooth glide.
- ★ **FILM-FORMING SYSTEM:** for enhanced adherence and long-lasting wear.

CLAIMS

- ♥ **VEGAN FRIENDLY - NO INGREDIENTS SOURCED OR DERIVED FROM ANIMALS**
- ♥ SMOOTH, PRECISE APPLICATION
- ♥ LONG-LASTING, COMFORTABLE WEAR
- ♥ EFFORTLESS GLIDE AND BLENDABILITY
- ♥ ENHANCED ADHERENCE FOR ALL-DAY DEFINITION
- ♥ FORMULATED WITHOUT: MICROPLASTICS

