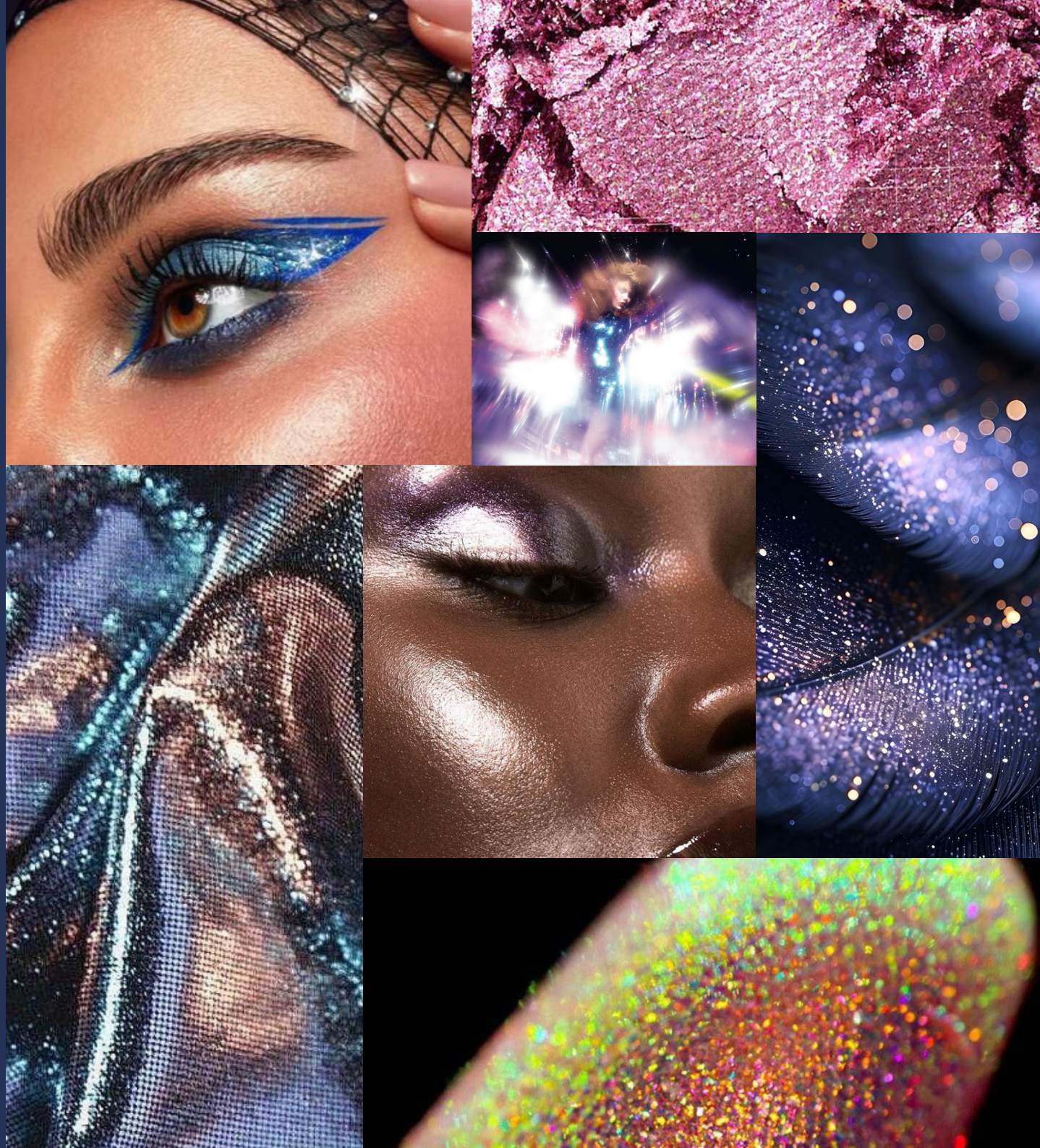


EYES

EYE SHADOW PALETTE

FULL SERVICE
PROPOSAL

DESIGNED BY



SUPREME

EYE BASE PRIMER

Experience supreme quality and performance in every application: this eye primer has a creamy, lightweight texture that effortlessly blends into the skin. Designed to enhance the appearance and long wearing of your makeup, this innovative formula smooths the eyelid surface, creating the perfect canvas for eyeshadow application. Formulated with a special film-forming polymer, which 'locks in' your makeup for all-day wear without creasing or fading. Whether you're going for a bold, dramatic look or a subtle, everyday style, Supreme Eye Base ensures your eyeshadow stays vibrant and flawless.

**Airtight packaging is recommended.*

ACTIVE INGREDIENTS

- ★ **HYALURONIC ACID MICROSPHERES (Functional dose):** rehydrate upon contact with the skin's moisture, resulting in an increase in volume for a hydrating and smoothing effect.
- ★ **FILM-FORMING POLYMER:** it has high water repellency and forms a film on the eyelid that ensures protection from external agents and long-lasting product wear. It has film-forming, protective, and waterproof properties while offering a light, non-heavy feel.
- ★ **COATED PIGMENTS:** the specific silicone coating makes the color creamier and improves the comfort of the product on the eyelids.

CLAIMS

- ♥ **VEGAN FRIENDLY - NO INGREDIENTS SOURCED OR DERIVED FROM ANIMALS**
- ♥ MATTIFYING PRIMER
- ♥ IMPROVES EYELID TEXTURE AND EYESHADOW LONG WEARING
- ♥ AVOID EYESHADOW CREASING OR FADING



SOLITAIRE JEWEL

EYESHADOW PALETTE

Solitaire Jewel elevates eye make-up to a new dimension of light, acting as a true gem for the eyes. Infused with an infinite release of pearls, it delivers a mirror-like effect, creating a translucent veil of shimmer that enhances any look with refined luminosity.

More than a traditional eyeshadow, it is a versatile, multifunctional product: wear it alone for a luminous statement or layer it as a topper to transform and intensify other shades. A single touch is enough to reveal a radiant, light-reflecting finish that feels both precious and effortless.



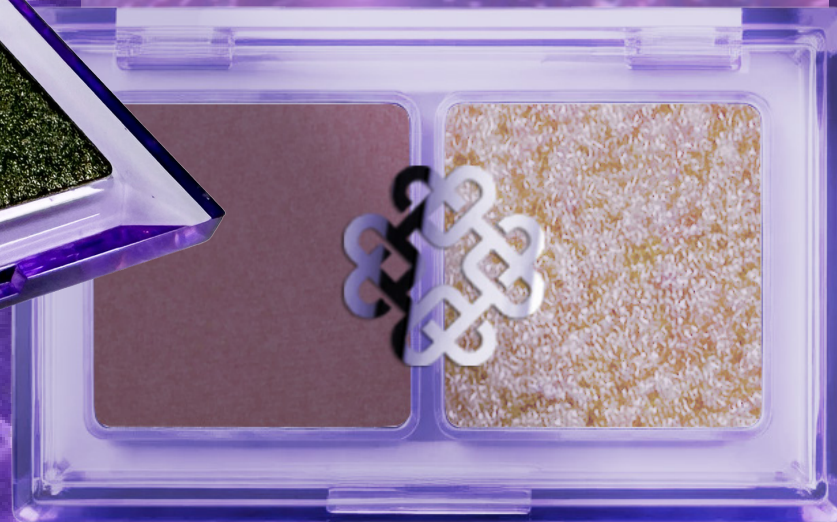
ICONIC DUET

EYESHADOW PALETTE

Iconic Duet redefines eye expression featuring two carefully curated shades designed to work in perfect harmony. The textures blend seamlessly to create effortless looks, from soft definition to more intense, dimensional effects.

Used together, the two shades create a complete and stunning eye look with ease, enhancing the eyes with a modern, refined finish.

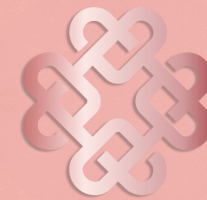
Simple, intuitive and undeniably iconic.



PEACH HARMONY

EYESHADOW PALETTE

Peach Harmony Quad brings together a curated selection of warm peachy tones designed to enhance the eyes with a soft, radiant glow. Each shade is carefully balanced to work in perfect harmony, allowing effortless blending and seamless transitions from subtle definition to more intense, dimensional looks. The silky textures glide onto the skin, delivering a smooth, even payoff with a refined finish. Used alone or layered together, the shades create a complete, harmonious eye look that feels modern, flattering and easy to wear.



BLUSHY NUDE

EYESHADOW PALETTE

Blushy Nude Quad captures the delicate beauty of rosy nude tones, creating a soft, romantic eye look with a naturally fresh appeal. The carefully curated shades blend effortlessly, enhancing the eyes with a touch of refined femininity.

The lightweight, silky textures melt onto the skin, delivering a smooth, diffused finish with a gentle shimmering effect. Layering the shades allows you to build depth and dimension, for an elegant, harmonious look that feels intimate, modern and effortlessly wearable.



SPICED PINK

EYESHADOW PALETTE

Spiced Pink Palette blends rich warm browns with vibrant pink accents, creating a bold yet wearable harmony of color. The carefully curated shades are designed to enhance the eyes with depth, warmth and a touch of playful intensity, allowing seamless transitions from soft definition to more expressive looks.

The velvety textures deliver rich color payoff and blend effortlessly, building dimension with ease. The result is a statement eye look where warm depth meets vivid pink energy, for a confident, modern expression.



THE BEAUTY CLUB Remastered

EYESHADOW PALETTE

Icy Rose Palette explores a refined harmony of cool rosy and violet tones infused with luminous silver accents, designed to enhance the eyes with a fresh, radiant glow. The shades are carefully curated to create effortless transitions, from soft, delicate definition to more intense, light-reflecting looks.

The silky textures glide smoothly onto the skin, delivering a luminous, diffused finish. Used alone or layered together, the shades create a complete eye look defined by cool rosy tones and luminous silver accents, delivering a fresh, icy and elegantly refined finish.



THE SIGNATURE EDIT

EYESHADOW PALETTE



Discover the perfect balance of everyday elegance and bold glamour with this sophisticated palette. Featuring a stunning mix of matt and dazzling shimmering shades, it's designed to elevate any look. These versatile colors are ideal for subtle, everyday beauty or for a special occasions. The metallic and sparkling finishes add a touch of luxury to every application. Effortlessly blendable and long-lasting, this palette is your go-to for any moment. Embrace the beauty, whether for day-to-day chic or dazzling night-time drama!